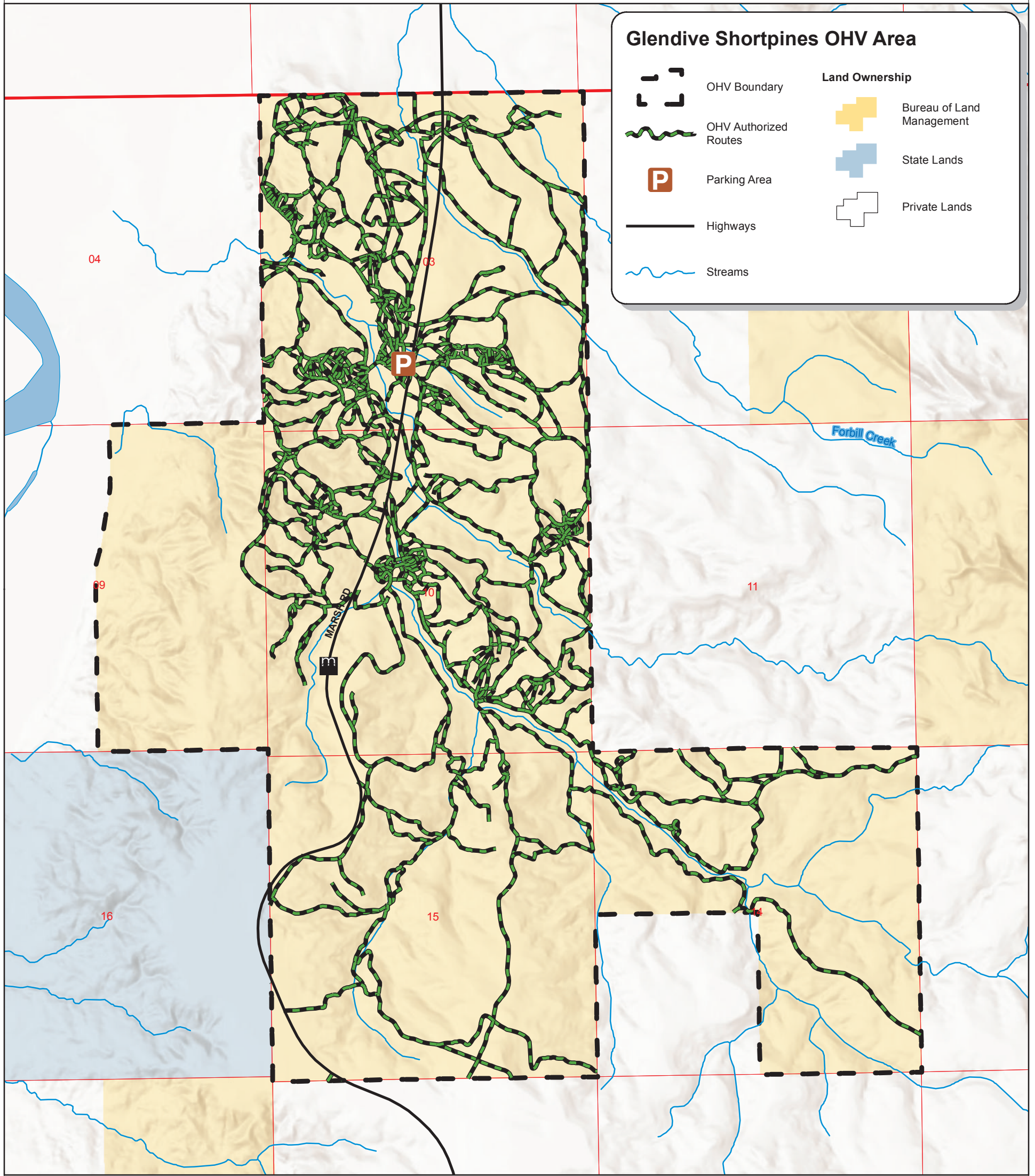




U.S. Department of the Interior
Bureau of Land Management

Glendive Short Pines OHV Area



Glendive Shortpines OHV Area

	OHV Boundary	Land Ownership	
	OHV Authorized Routes		Bureau of Land Management
	Parking Area		State Lands
	Highways		Private Lands
	Streams		

Unless otherwise noted, all wheeled motorized travel on public lands is restricted to designated routes. Roads not shown on this map, which are found on BLM lands, are closed to all motorized travel.

Always seek private land owners' permission before using or crossing their lands.

for current land status, consult official records at Bureau of Land Management.

This map is intended for display purposes only. No warranty is made by the Bureau of Land Management as to the accuracy, reliability, or completeness of these data sets for individual or aggregate use with other data, or for purposes not intended by the BLM. This map may not meet National Map Accuracy Standards. This product was developed through digital means and information may be updated without notification.

Leave No Trace
Center for Outdoor Ethics | LNT.org

- Plan Ahead and Prepare
- Travel and Camp on Durable Surfaces
- Dispose of Waste Properly
- Leave What You Find
- Minimize Campfire Impacts
- Respect Wildlife
- Be Considerate of Other Visitors

GET THE APP >
Start by downloading the Avenza Maps app to your smartphones and tablets. It's compatible with iOS and Android devices.



GET THE MAP >
Download this map using the Avenza app.



1:20,000 North American Datum 1983

0 0.25 0.5 0.75 1 Miles

